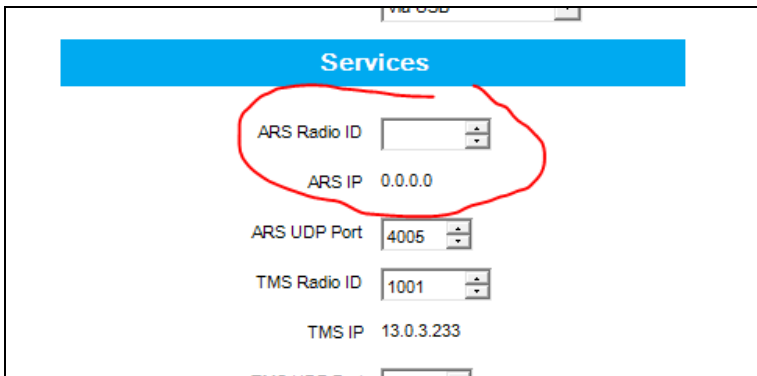


There are several parts to enabling GPS.

1. Configure the Radio Via CPS - you must enable both [b]GPS[/b] and [b]ARS[/b] and set their destination radio ID to ID of you base Station.

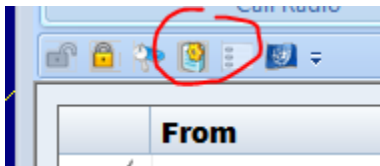
(If GPS is enabled and ARS is disabled the radio will not transmit GPS data).



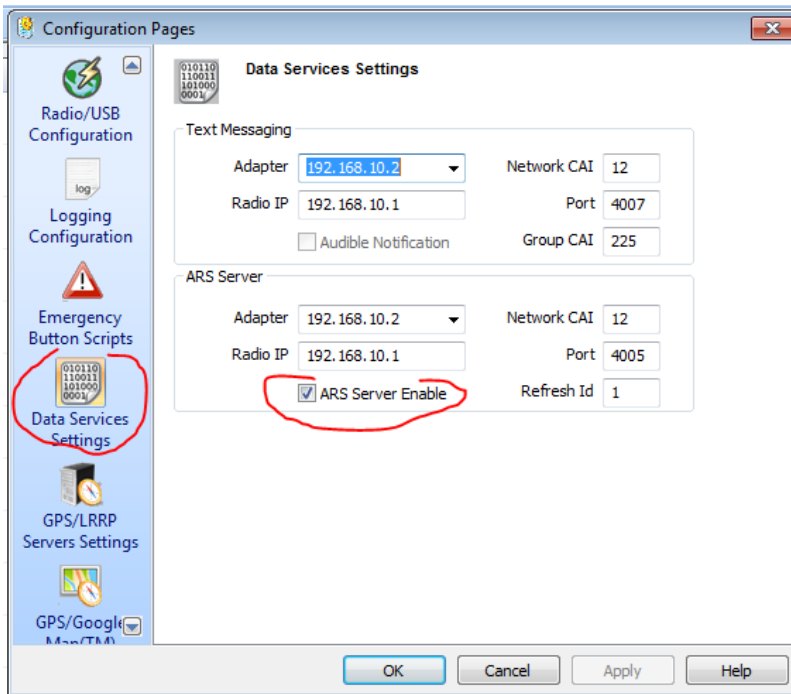
Note: This snip if from a radio that doesn't have GPS installed.

2. Ensure that TransTRBO application has GPS Enabled and also enable the built in ARS server (if you don't have an ARS server anywhere on your network)

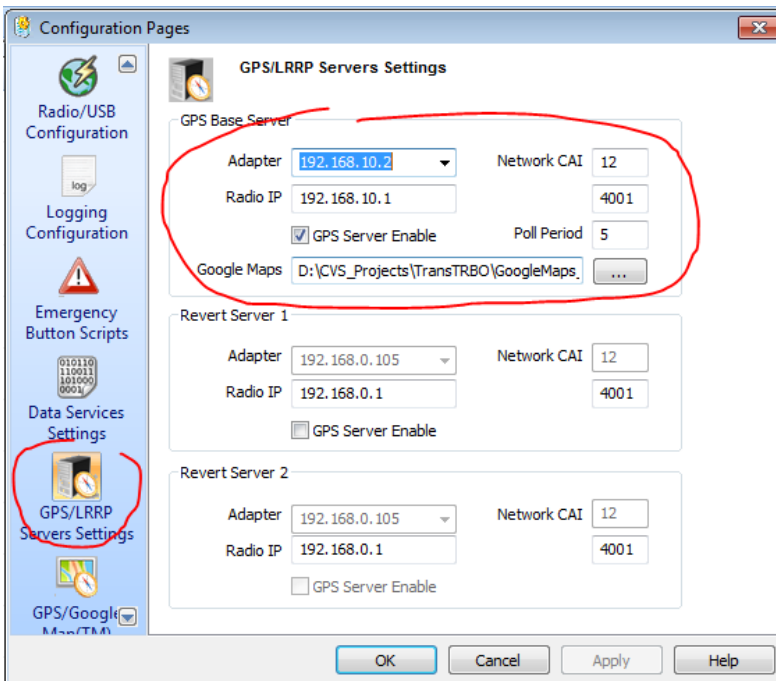
2a). Open the TransTRBO Configuration property sheets by clicking its icon in the menu toolbar or from the system menu (refer help file).



2b) From the Configuration property dialog sheets - Select **Data Services Settings** page and set the appropriate values



2c) Then select **GPS/LRRP Server** settings page and set the appropriate values



3. Finally, select the **Location** Tab and use:

3a) **Update Lists** to create a list of Radio's to be interrogated.

3b) **Load List** to load/start an interrogation of GPS positions

